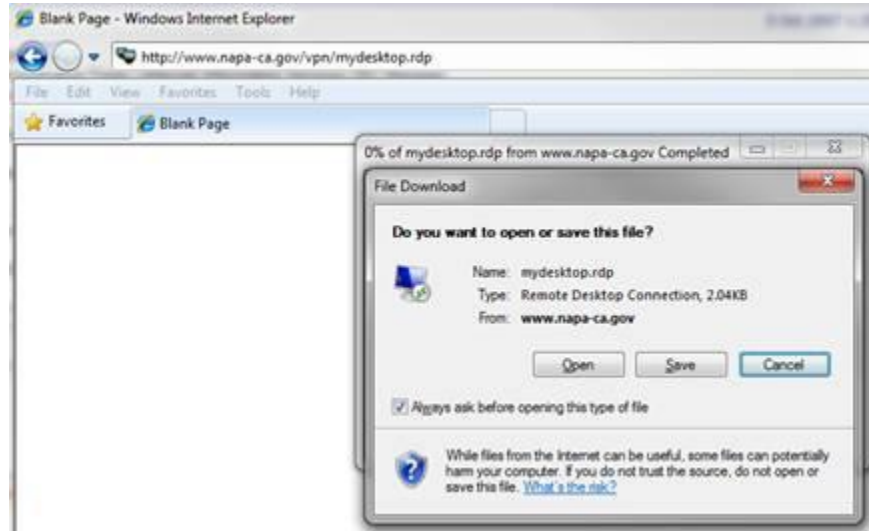
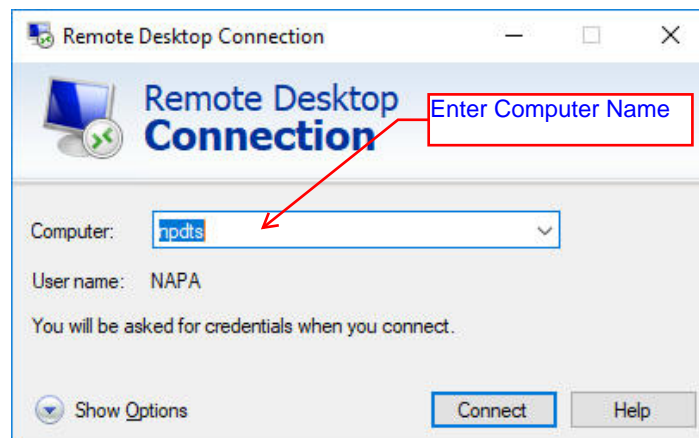
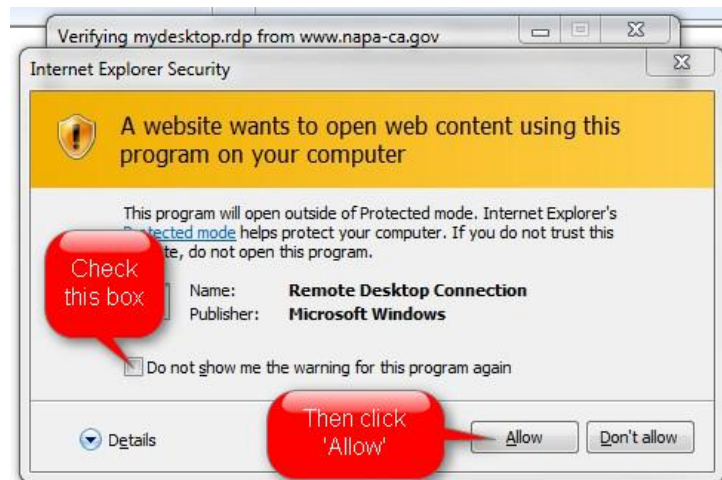


From your remote (home) computer ensure you are connected to the Internet.
From Internet Explorer, launch the following URL:
<http://www.cityofnapa.org/images/it/mydesktop.rdp>



Click 'Save' and choose your desktop then open the shortcut from your desktop.





The next time you connect, the 'computer name' will be pre-populated and you will only be prompted for your Windows username and password.

Troubleshooting

If you are connecting from a remote (home) PC that is not owned by the City, we will not be able to troubleshoot connection problems.