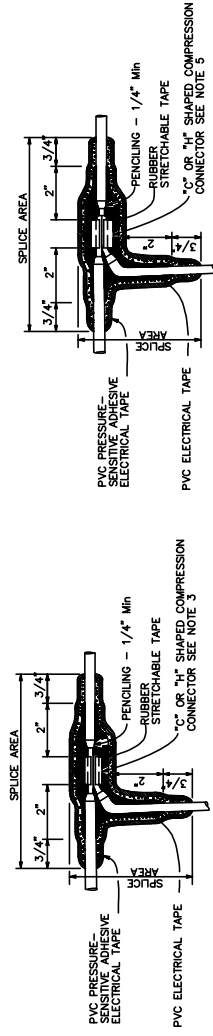
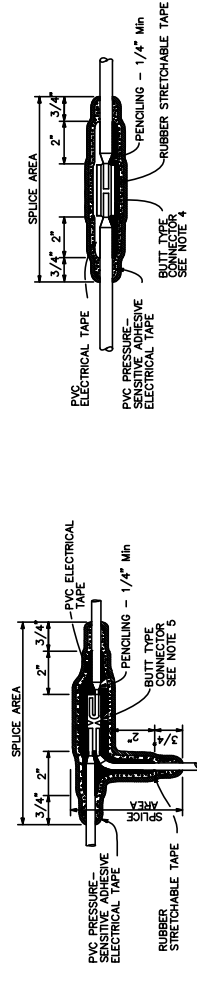


© 2017 California Department of Transportation
All Rights Reserved

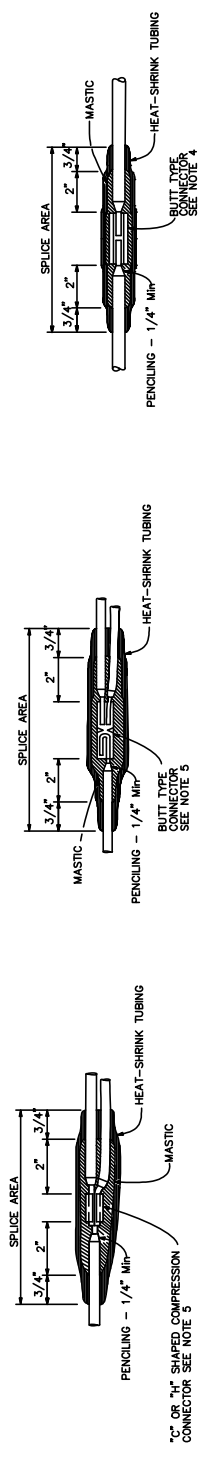


NOTES:

1. Dimensions are minimum.
2. Rubber tapes shall be rolled after application.
3. Between 1 free-end and 1 through conductor.
4. Between 2 free-end conductors.
5. Between 3 free-end conductors.



TYPICAL SPLICE INSULATION METHOD B



TYPICAL SPLICE INSULATION HEAT-SHRINK TUBING

STATE OF CALIFORNIA
DEPARTMENT OF TRANSPORTATION
ELECTRICAL SYSTEMS
(SPLICE INSULATION METHODS DETAILS)
NO SCALE

RSP ES-13A DATED JULY 21, 2017 SUPERSEDES RSP ES-13A DATED APRIL 15, 2016 AND STANDARD PLAN ES-13A DATED OCTOBER 30, 2015 - PAGE 484 OF THE STANDARD PLANS BOOK DATED 2015.

REVISED STANDARD PLAN RSP ES-13A

5-21

CITY OF NAPA

PUBLIC WORKS DEPARTMENT

CALTRANS STANDARD PLAN ES-13A
ELECTRICAL SYSTEMS

DRAWN BY:	BRL
DATE:	06/2018
SCALE:	NONE
FIELD NOTES:	

CHECKED BY:	SEC
APPROVED BY:	JRL
DRAWING NO.	E-5