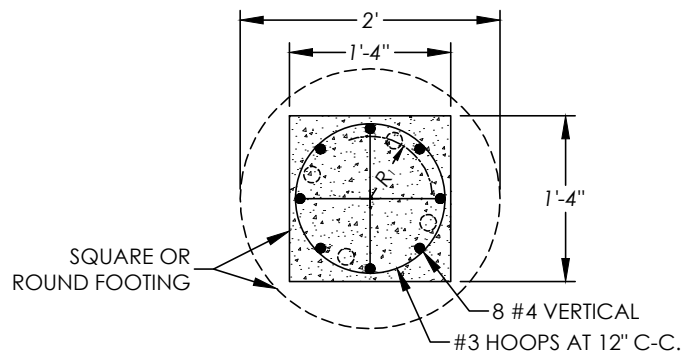


PLAN VIEW - POLE



R₁ = ANCHOR BOLT DIA. DIMENSION R AND
BOLT PATTERN TO SUIT POLE BASE FURNISHED.

PLAN VIEW - FOUNDATION

NOTES

1. REFER TO THE CITY OF NAPA DOWNTOWN SPECIFIC PLAN FOR APPROVED LOCATIONS OF THIS STANDARD STREET LIGHT. ALL OTHER STREET LIGHTS TO BE USED OUTSIDE THE DOWNTOWN SPECIFIC PLAN AREA SHALL CONFORM TO CITY STANDARD DRAWING E-1.
2. FOOTING SHALL BE 24" DIAMETER BY 3' DEEP CONCRETE. TOP OF FOOTING SHALL BE FLUSH WITH SIDEWALK.
3. ACCESS DOOR SECURED TO BASE WITH TAMPER PROOF HEX SOCKET SECURITY MACHINE SCREWS.
4. ACCESS DOOR SHALL BE POSITIONED AWAY FROM STREET.
5. BOLTS SHALL BE 5/8" x 18" x 3" GALVANIZED STREET LIGHT BOLTS WITH 11' BOLT CIRCLE
6. POLE SHALL ADHERE TO SHAKESPEARE CS - CORAL GABLES 12' FLAT BLACK SPEC ANCHOR PLACE AND TENON. SPECIFICATION NO: ACG20-12AF1103
7. LED SHALL ADHERE TO LIGHT EFFICIENT DESIGN STANDARDS FOR LED-8029
8. GLOBE AND ASSEMBLY SHALL BE ELA COMPANY INC. GLOBE AND ASSEMBLY SHALL BE AN ACORN GLOBE WITH 9" OPENING, MEDIUM BASE PORCELAIN SOCKET WITH 1.5" x 1/8-27#4066, 120V BUTTON PHOTOCCELL, CAST BALLAST HOUSING FITTER INCANDESCENT, MEDIUM BASE, ACRYLIC DIFFUSER AND STIPPLED. GLOBE ASSEMBLY TO BE APPROVED BY CITY OF NAPA STAFF.

CITY OF NAPA

PUBLIC WORKS DEPARTMENT

ORNAMENTAL STREET LIGHT - DOWNTOWN
SPECIFIC PLAN

DRAWN BY:	BRL
DATE:	06/2018
SCALE:	NONE
FIELD NOTES:	

CHECKED BY:	SEC
APPROVED BY:	JRL
DRAWING NO.	E-6