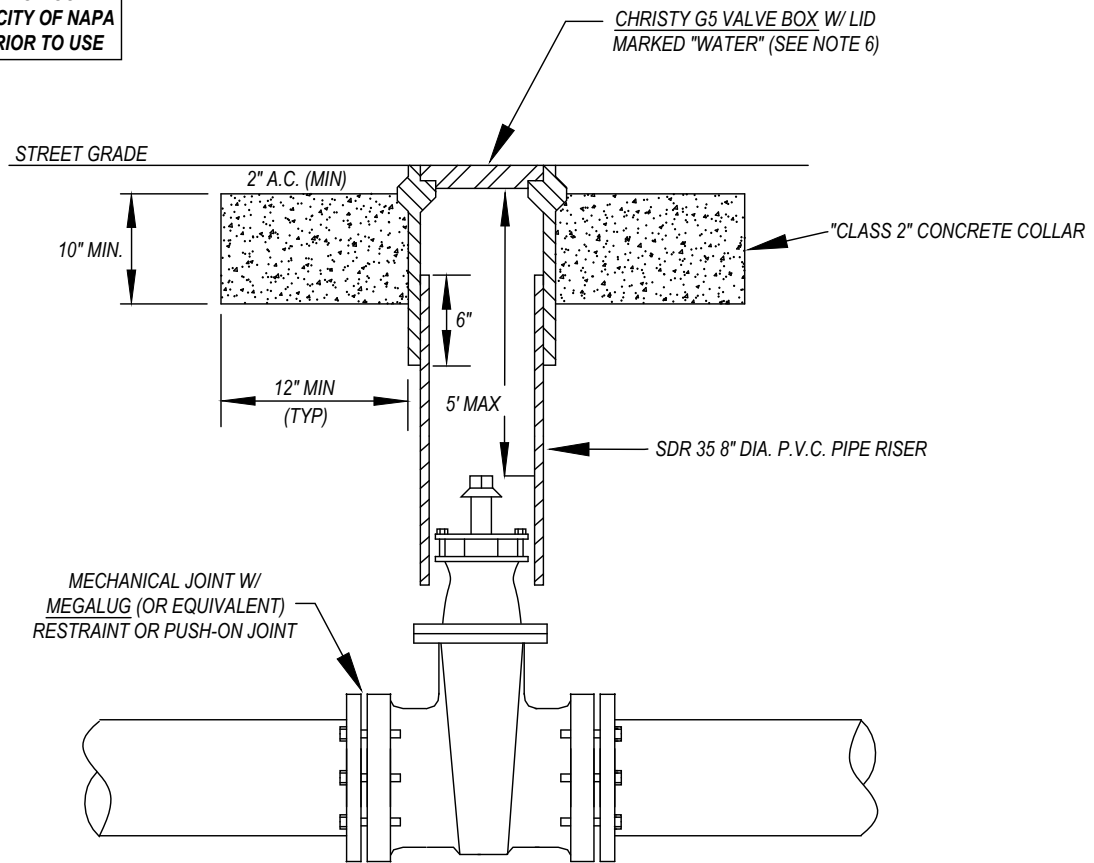


ALTERNATE MATERIALS MUST BE APPROVED BY THE CITY OF NAPA WATER DIVISION PRIOR TO USE



NOTES

1. BUTTERFLY VALVES SHALL BE INSTALLED FOR 12" AND LARGER PIPES. VALVE NUTS SHALL BE PLACED ON THE SIDE OF THE MAIN CLOSEST TO THE NEAREST CURB.
2. GATE VALVES SHALL BE USED FOR ALL PIPE SIZES SMALLER THAN 12", UNLESS OTHERWISE APPROVED BY THE WATER DIVISION ENGINEER. GATE VALVES SHALL BE NON-RISING STEM WITH SQUARE OPERATING NUT, OPEN LEFT, AND HAVE STAINLESS STEEL NUTS AND BOLTS.
3. VALVE RING SHALL BE SET TO GRADE PRIOR TO PLACING FINISHED PAVEMENT.
4. THE TWO (2) INCH SQUARE OPERATING NUT ON ALL VALVES SHALL BE INSTALLED AT A MAXIMUM OF 5-FEET IN DEPTH MEASURED FROM THE TOP OF THE OPERATING NUT TO FINISHED GRADE. ALL OPERATING NUTS INSTALLED AT A DEPTH GREATER THAN 5-FEET SHALL INCLUDE A VALVE EXTENSION TO RAISE THE OPERATING NUT TO 24" FROM FINISHED GRADE.
5. VALVE EXTENSIONS (IF REQUIRED) SHALL BE ROUND OR SQUARE 1.5" DIAMETER STEEL ROD, WELDED CONSTRUCTION, AND COATED WITH TOP CENTERING RING AND AWWA 2" OPERATING NUTS TOP AND BOTTOM (PIPELINE PRODUCTS SX-900 OR SIMILAR). SOCKET END SHALL BE DRILLED AND TAPPED WITH TWO (2) 1/4" SET SCREWS INSTALLED ON OPPOSITE SIDES. OPERATING NUT SHALL BE DRILLED WITH RECESSES TO ACCEPT THE TWO (2) 1/4" SET SCREWS. SET SCREWS SHALL BE SECURELY FASTENED TO THE OPERATING NUT.
6. WATER VALVES SHALL BE OPERATED BY WATER DIVISION PERSONNEL ONLY.
7. WATER DIVISION ENGINEER MAY REQUIRE THE INSTALLATION OF BINGHAM & TAYLOR 12" MARK VII VALVE BOXES FOR HEAVILY TRAVELED ROADWAYS.

CITY OF NAPA

UTILITIES DEPARTMENT

TITLE

VALVES

DRAWN BY: DF
 APPROVAL DATE: 09/2021
 SCALE: NTS
 REVISED DATE: 09/2021

CHECKED BY: SL
 APPROVED BY: DD
 DRAWING NO. W-9