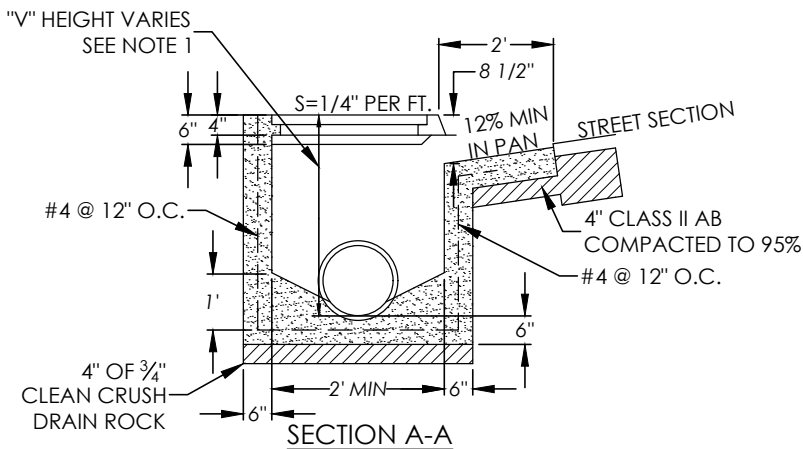
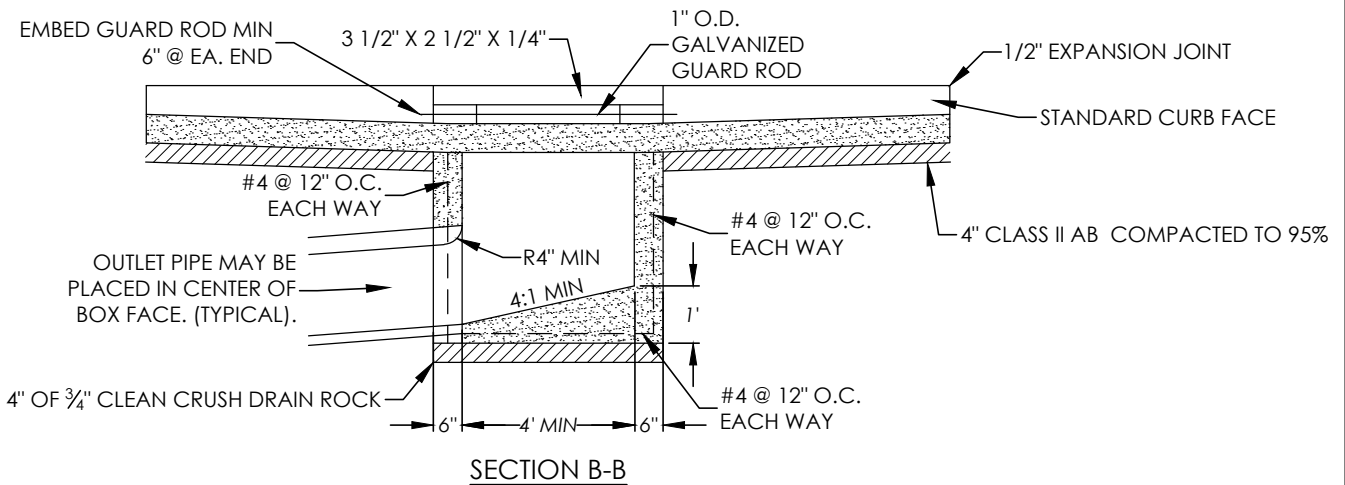
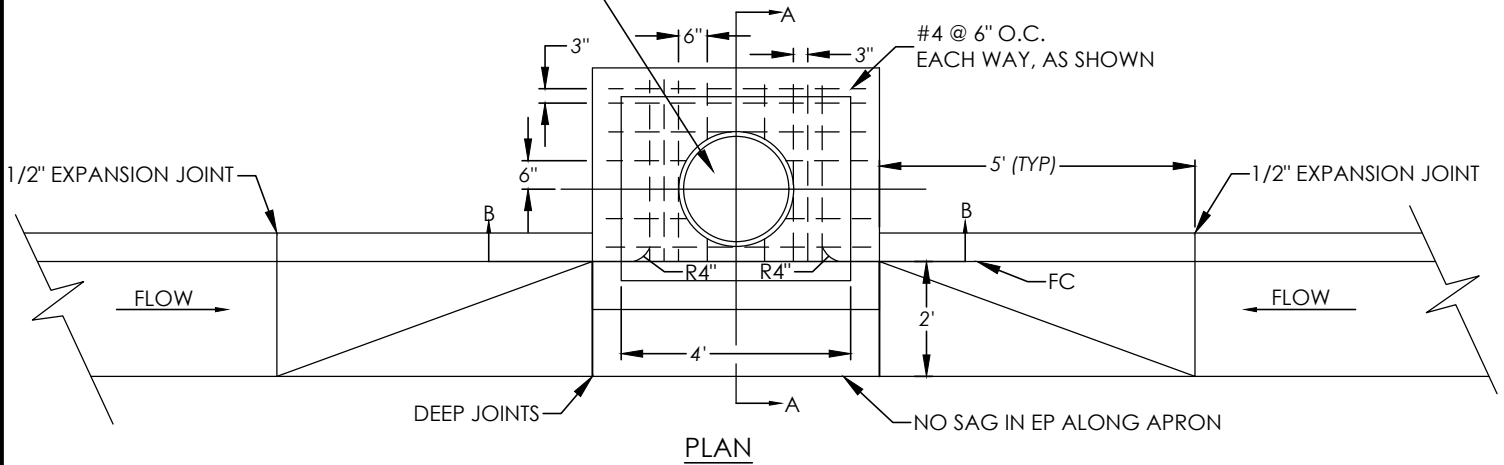


STANDARD 24" SIDEWALK MANHOLE RING & COVER. CAST IRON MANHOLE COVER PER CITY STD. SWQ-206



NOTES

1. "V" = 3'-6" MINIMUM. FOR "V" GREATER THAN 5' INCREASE THICKNESS OF SIDEWALL 1" FOR EACH FOOT OF DEPTH OVER 5'.
2. ALL CONCRETE SHALL BE 4000 PSI (6 SACK/CY).
3. PRECAST BOXES AND GRADE RINGS MAY BE USED WHEN APPROVED BY THE ENGINEER.
4. ALL MATERIALS EXCEPT REINFORCING STEEL SHALL BE SHOP GALVANIZED AFTER FABRICATION.
5. PRECAST GALLERIES OR EXTENSIONS WHEN USED SHALL BE INSTALLED PER MANUFACTURER'S INSTRUCTIONS.
6. OPTIONAL BASE MAY BE USED WITH D-2 CATCH BASIN WHEN STORM DRAIN IS 36" DIA. OR LARGER.
7. NO MORE THAN 2" OF GROUT IS ALLOWED BETWEEN POURED WALLS AND PRECAST TOPS.
8. CATCH BASIN SHALL BE CONSTRUCTED TO WITHSTAND H2O LOADING.

CITY OF NAPA

PUBLIC WORKS DEPARTMENT

TYPE D-2
CATCH BASIN

DRAWN BY:	BRL
DATE:	06/2018
SCALE:	NONE
FIELD NOTES:	

CHECKED BY:	JGF
APPROVED BY:	JRL
DRAWING NO.	D-2