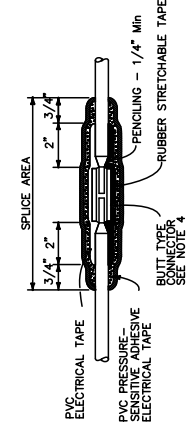
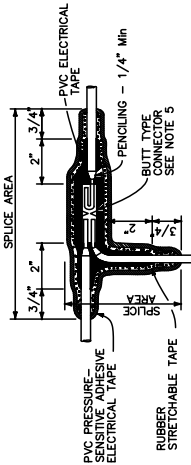
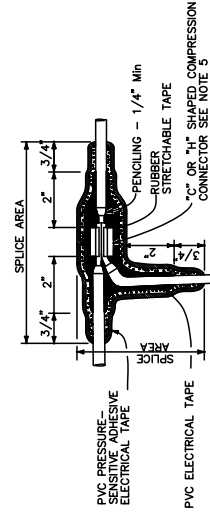
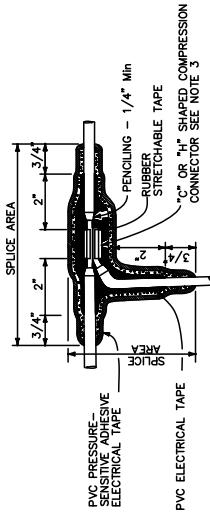
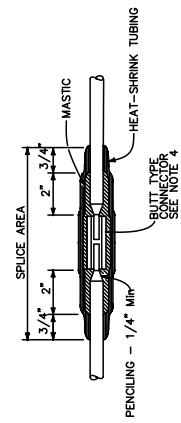
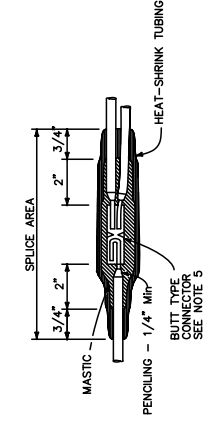
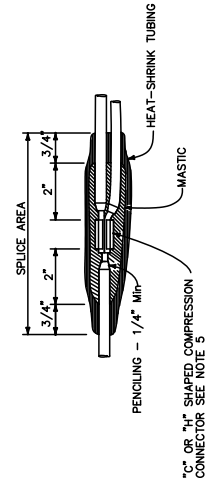


© c 2017 California Department of Transportation
All Rights Reserved



TYPICAL SPlice INSULATION METHOD B



TYPICAL SPlice INSULATION HEAT-SHRINK TUBING

- NOTES:
1. Dimensions are minimum.
 2. Rubber tapes shall be rolled after application.
 3. Between 1 free-end and 1 through conductor.
 4. Between 2 free-end conductors.
 5. Between 3 free-end conductors.

STATE OF CALIFORNIA
DEPARTMENT OF TRANSPORTATION
ELECTRICAL SYSTEMS
(SPlice INSULATION METHODS DETAILS)
NO. SCALE
RSP ES-13A DATED JULY 21, 2017 SUPERSEDES RSP ES-13A DATED APRIL 15, 2016 AND STANDARD PLAN ES-13A DATED OCTOBER 30, 2015 - PAGE 464 OF THE STANDARD PLANS BOOK DATED 2015.
REVISED STANDARD PLAN RSP ES-13A

NOTE:
APPROVAL FROM CITY OF NAPA ENGINEER REQUIRED.
SUBMIT SHOP DRAWINGS & SPECIFICATIONS FOR REVIEW.

DRAWN BY:	BRL
APPROVAL DATE:	06/2018
SCALE:	NONE
REVISED DATE:	08/2021

CHECKED BY:	SEC
APPROVED BY:	JRL
DRAWING NO.	E-5