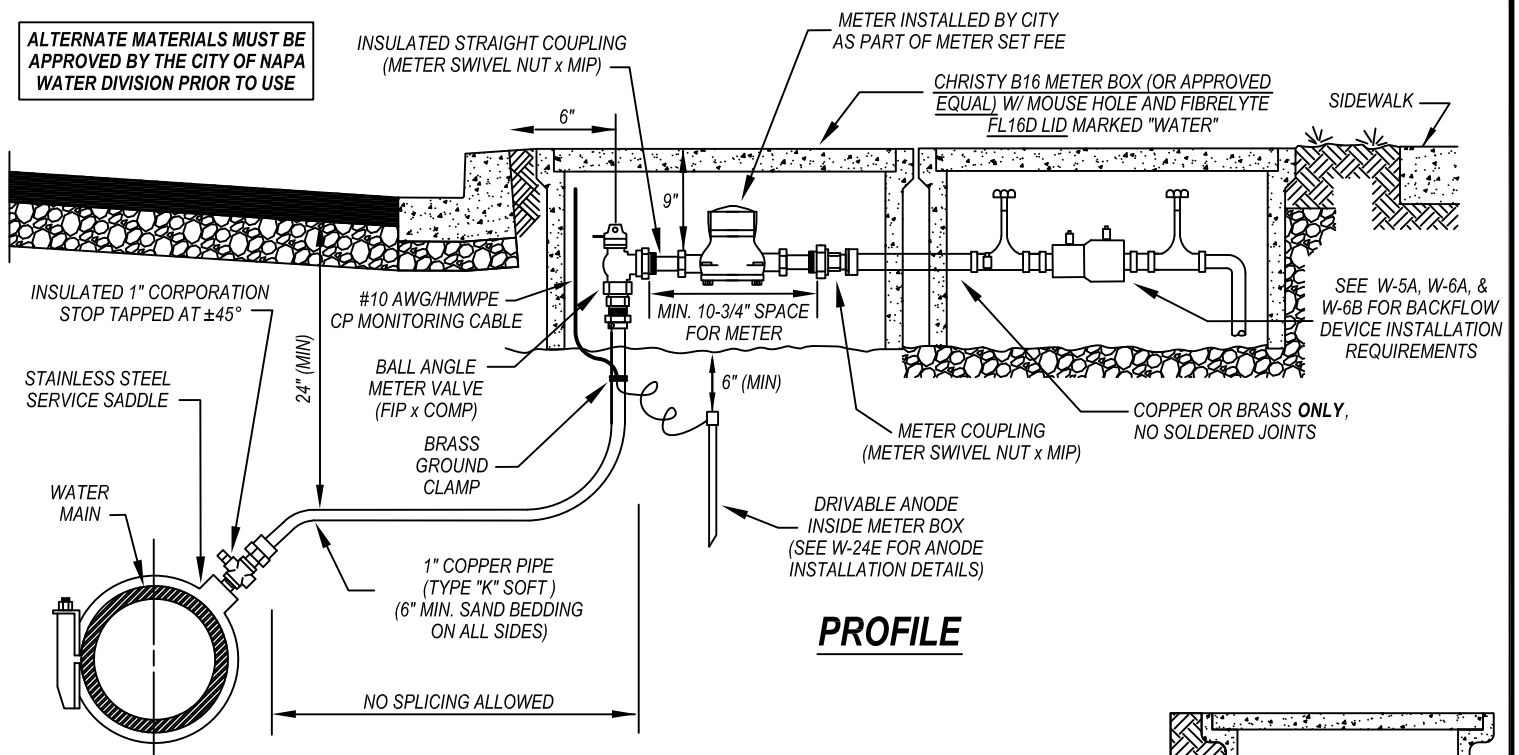


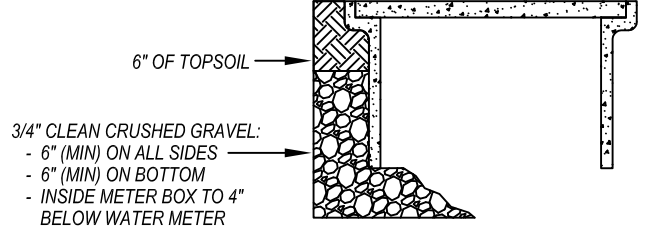
ALTERNATE MATERIALS MUST BE APPROVED BY THE CITY OF NAPA WATER DIVISION PRIOR TO USE



PROFILE

APPROVED FITTINGS		
DESCRIPTION	MUELLER	FORD
BRASS METER IDLER	H-10887	-
BALL ANGLE METER VALVE (FIP x COMP)	B-24274	-
METER COUPLING (METER SWIVEL NUT x COMP)	H-14201	-
INSULATED CORPORATION STOP (MIP x COMP)	N-35028**	-
INSULATED STRAIGHT COUPLING (METER SWIVEL NUT x MIP)	H-10871**	-
STAINLESS STEEL SERVICE SADDLE (SMITH-BLAIR #372, FORD #300, JCM #502)		

** SHALL BE INSULATED FITTINGS BY MUELLER OR JONES



DETAIL

METER BOX INSTALLATION

NOTES

- OBSTRUCTIONS:** METERS SHALL BE PLACED 3-FT MIN. FROM ANY OBSTRUCTION (SIGNS, FENCES, MAILBOX, ETC.). METERS SHALL BE INSTALLED 10-FT MIN. FROM TREES (5-FT MIN. FROM SHRUBS). SEE W-18 FOR ADDITIONAL DETAILS.
- WATER-SEWER SEPARATION:** WATER-SEWER (OR WATER-RECYCLED WATER) SEPARATION SHALL COMPLY WITH ALL CALIFORNIA DEPARTMENT OF HEALTH SERVICES REQUIREMENTS. WATER SERVICES SHALL BE 10-FT MIN. (PARALLEL) AND 1-FT MIN. ABOVE (PERPENDICULAR) ALL SEWER (OR RECYCLED WATER) UTILITIES.
- HOT-TAP:** HOT-TAPS TO ACTIVE WATER MAINS SHALL BE MADE BY CITY FORCES AT APPLICANT'S EXPENSE. SEE W-16 FOR HOT-TAP REQUIREMENTS. HOT-TAP SHALL BE INSTALLED 24" MIN. FROM ANY TAP, BELL, FITTING, WATER SERVICE, ETC.
- METALLIC PIPE AND FITTINGS:** BURIED SECTIONS SHALL BE WRAPPED WITH AN 8-MIL PLASTIC SLEEVE. COPPER PIPE NOT WRAPPED IN A PLASTIC SLEEVE SHALL BE NSF 61 APPROVED PLASTIC COATED COPPER TUBING (TYPE "K" SOFT BLUE IN COLOR). INSULATED COUPLING SHALL BE WRAPPED WITH 10-MIL HIGH TACK PIPE WRAP TAPE 3-FT MIN. TO EACH SIDE OF THE INSULATION POINT.
- METER BOX AND SERVICE LINE INSTALLATION:** INSTALL 3-FT MIN. OUTSIDE ANY VEHICULAR ACCESS WAY.
- CURB ADJACENT SIDEWALK:** INSTALL THE METER AT BACK OF CURB AS SHOWN. INSTALL BACKFLOW DEVICE BEHIND SIDEWALK.
- BACKFLOW PREVENTION DEVICES:** APPROVED DEVICES SHALL BE INSTALLED AND TESTED PRIOR TO THE INSTALLATION OF METERS. USE OF JUMPERS, HOSE BIBS, ETC. IS PROHIBITED.
- TWO OR MORE SERVICES:** INSTALLATION OF TWO OR MORE SERVICES REQUIRE CONNECTION OF PERMANENT ADDRESS TAGS FOR EACH METER WHICH SHALL BE DURABLY FIXED TO THE METER PRIOR TO WATER SERVICE ACTIVATION.
- WATER SERVICE SIZE:** ALL WATER SERVICES SHALL BE APPROPRIATELY SIZED FOR THE INTENDED USE. THE WATER DIVISION RESERVES THE RIGHT TO REQUIRE A WATER SERVICE ANALYSIS TO EVALUATE DEMANDS AND THE APPROPRIATENESS OF THE SERVICE SIZE(S). UNDERSIZED WATER SERVICES ARE PROHIBITED.

CITY OF NAPA

PUBLIC WORKS DEPARTMENT

TITLE
3/4" AND 1" WATER SERVICE

DRAWN BY: DCF
DATE: 07/2017
SCALE: NTS
FIELD NOTES:

CHECKED BY: MJH
APPROVED BY: MJH
DRAWING NO. W-1