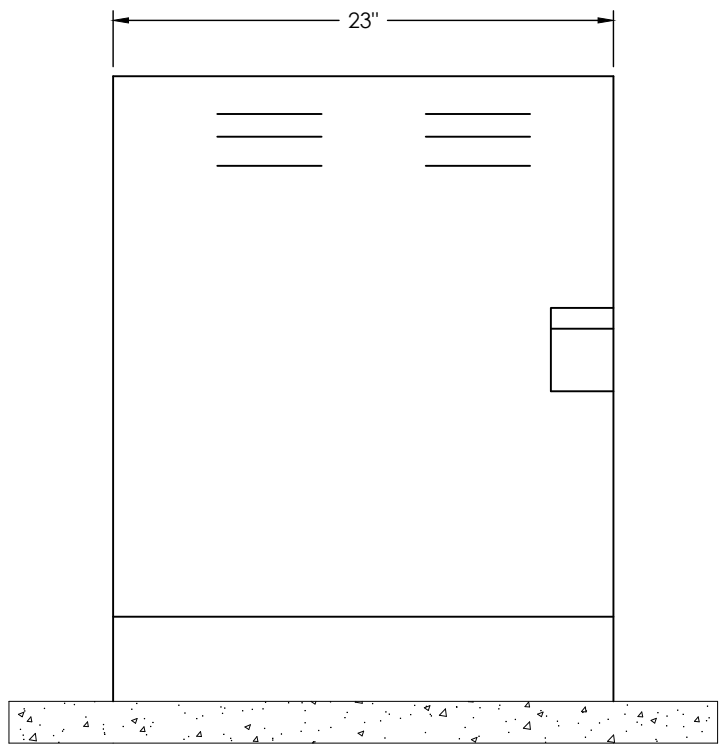


SIDE VIEW



FRONT VIEW

CONTROLLER CABINET LEMEUR MODEL A OR EQUAL, COLOR GREEN ON CONCRETE FOUNDATION WITH MIN. 24" APRON.

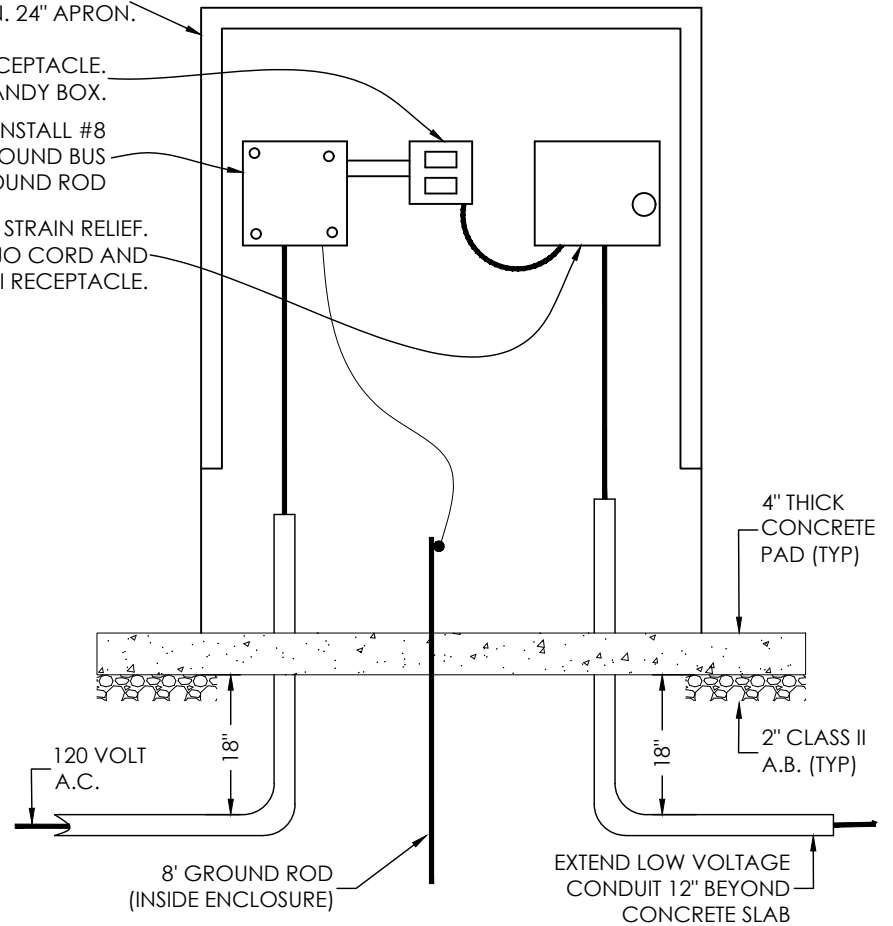
SINGLE-GANG HANDY BOX WITH ONE GFCI DUPLEX RECEPTACLE. INSTALL OFFSET NIPPLE FROM LANDING CAN TO HANDY BOX.

6" X 6" LANDING CAN WITH GROUND BUS, INSTALL #8 ARMORED GROUND CABLE FROM GROUND BUS TO 8' COPPER CLAD GROUND ROD

CONTROLLER AS SPECIFIED, WITH 14/3 SJO CORD WITH STRAIN RELIEF. INSTALL 90 DEGREE CORD CAP ON OTHER END OF SJO CORD AND PLUG INTO GFCI RECEPTACLE.

NOTES

1. CONTACT CITY OF NAPA ELECTRICAL DEPT. FOR ELECTRICAL SERVICE LOCATIONS AND PRIOR TO STARTING ELECTRICAL WORK (707) 257-9588.
2. CONTROLLER SERVICE LOCATION SHALL BE ESTABLISHED PRIOR TO CONSTRUCTION.
3. ELECTRICAL SERVICE AND LOW VOLTAGE CONDUIT SHALL BE 1 1/2" PVC SHD. 40, BURIED AT 18" DEEP.
4. CONTACT CITY OF NAPA ELECTRICAL DEPT. PRIOR TO BACKFILLING ANY ELECTRICAL TRENCHES.
5. CONTACT PG&E REGARDING LOCATION OF POWER SOURCE AND METERING REQUIREMENTS.
6. PAD SHALL BE 4" THICK ON 2" OF CLASS II A.B. CONCRETE SHALL BE CLASS "A" (6 SACKS PER CY).



CITY OF NAPA

PARKS & RECREATION SERVICES DEPARTMENT

NON CENTRAL IRRIGATION
CONTROLLER CABINET

DRAWN BY: BRL
APPROVAL DATE: 06/2018
SCALE: NONE
REVISED DATE:

CHECKED BY: DMP
APPROVED BY: JRL
DRAWING NO. PL-3A