

From: [REDACTED]
To: [Tiffany Carranza](#); [Caitlin Saldanha](#); [Districts](#)
Cc: [REDACTED]
Subject: Napa County Progressive Alliance 5-District Map (Revised)
Date: Wednesday, March 25, 2020 1:49:32 PM
Attachments: [NCPA 5-dist. proposal, rev. 3-23-20.pdf](#)

[EXTERNAL]

Dear Ms. Carranza,

On the behalf of the Napa County Progressive Alliance, we hereby submit a revised five-district map to replace the map we submitted on March 10th (see attached). The revised map balances the population distribution of ALL of the districts to be within the requested maximum deviation of less than ten percent from largest to smallest. When posting to the city website, please indicate in the map title that the map has been revised, i.e., "Napa County Progressive Alliance (Revised)". The map is also available at <https://districtr.org/edit/3052>.

As stated previously, we developed a five-district map that would allow the mayor to be elected annually by the city council. The map meets the population requirement for each district and maintains communities of interest, with or without the two main county islands (West Pueblo/Linda Vista and Imola/Parrish islands) being included.

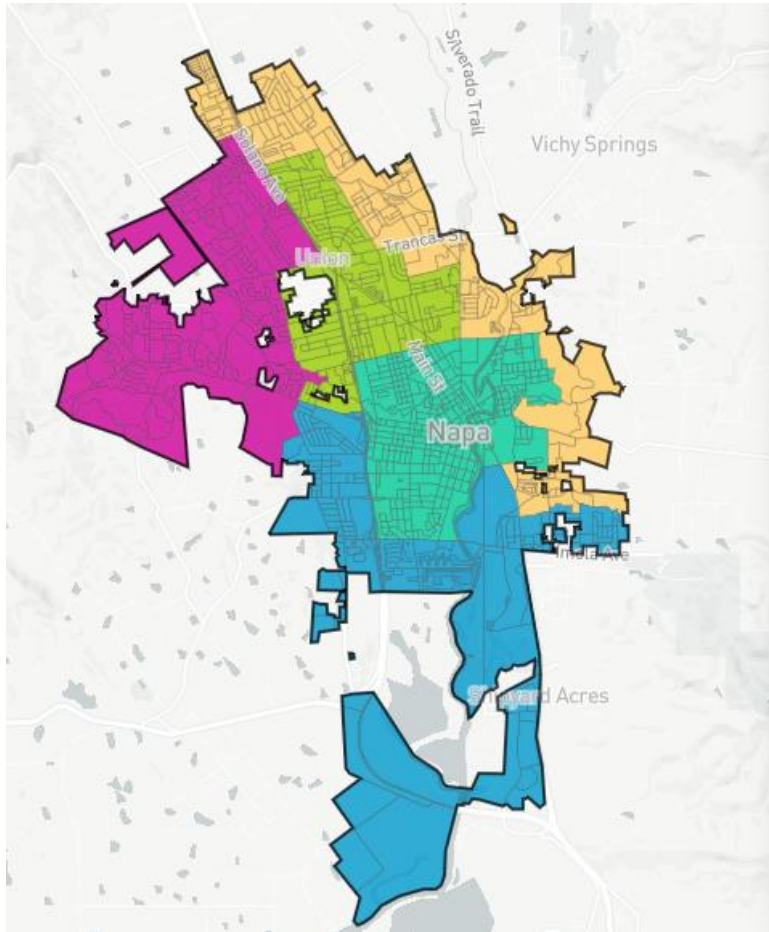
Our rationale for this map is the following:

1. The five-district map lends itself better than a four-district map to grouping communities of interest that take into account ethnicity, neighborhoods and major geographic definers (such as major streets, Highway 29, and the Napa River), shopping centers that the respective communities frequent, neighborhood schools, and types of housing and patterns of residential development. The eastern district represents a community of interest by virtue of its concern for the fire danger posed by wildfires that typically originate from the east.
2. Having the mayor chosen by the council members elected from districts, and not at large, would promote the legislative purpose of the California Voting Rights Act to reduce minority-vote dilution; it would also level the playing field for grassroots candidates and limit the impact of large campaign contributions.
3. In terms of population, this map allows for the creation of a majority Latino district and a second district just shy of a majority. This second Latino-influential district would be a majority if the West Pueblo/Linda Vista county island were annexed, something for which we have advocated. Two Latino council members would accurately reflect the ethnic makeup of our city as a whole.
4. Looking ahead to when the West Pueblo/Linda Vista and Imola/Parrish islands are annexed, these residents, being majority Latino with a high proportion of renters, would be part of districts that reflect their respective communities of interest—a factor that the council should strongly consider in approving district maps.

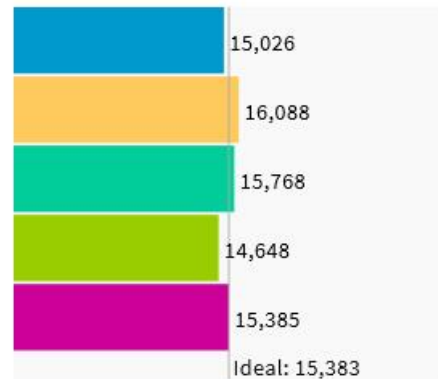
Respectfully submitted,

Napa County Progressive Alliance
Amy Martenson, Co-Coordinator
Gary Orton, Secretary

**NAPA COUNTY PROGRESSIVE ALLIANCE
FIVE-DISTRICT PROPOSAL (revised, 3/23/20)**



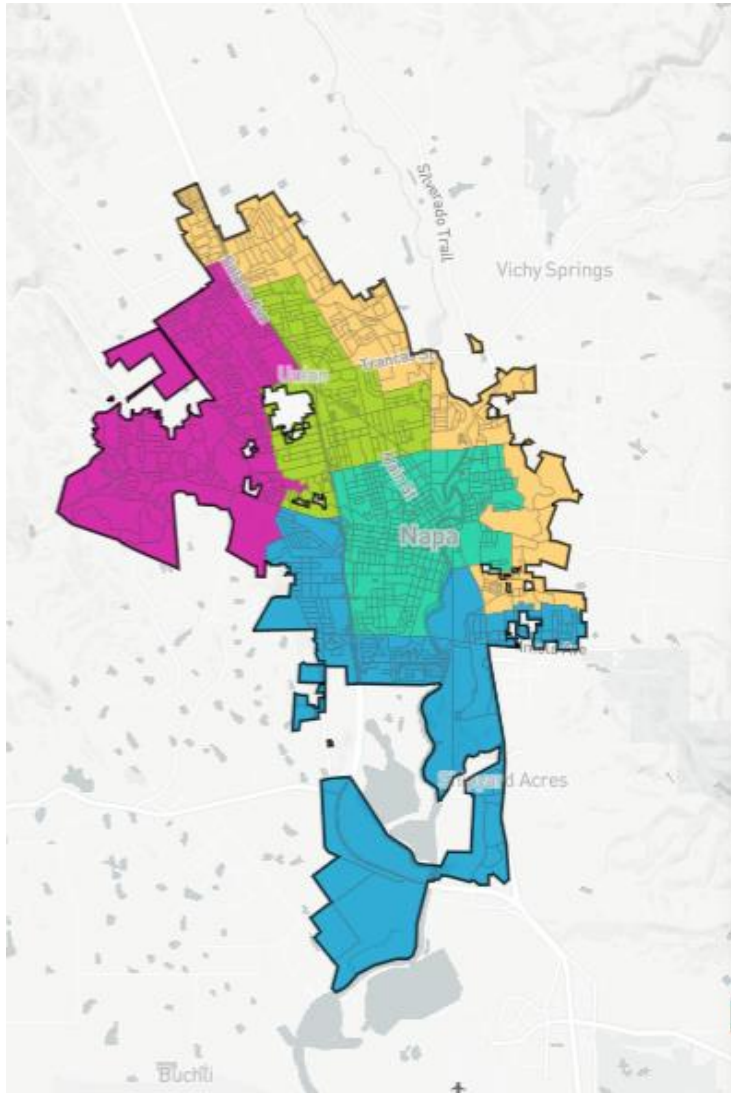
▼ Population Balance



UNASSIGNED POPULATION: 0

MAX. POPULATION DEVIATION: 4.78%

Highlight unassigned units



▼ Racial Balance

COMPARE

WITH

AND

	White	Hispanic	Asian
1	43%	52.5%	1.7%
2	64%	29.5%	3.4%
3	54.2%	41.1%	1.4%
4	46%	49.6%	1.7%
5	77.5%	16.5%	2.6%
Overall	57.2%	37.6%	2.2%

▼ VAP Balance

COMPARE

WITH

AND

	WWAP	HVAP	AVAP
1	49.7%	45.8%	1.9%
2	68.6%	24.9%	3.8%
3	60%	35%	1.7%
4	52.2%	43.8%	1.8%
5	80.4%	14%	2.9%
Overall	62.7%	32.1%	2.5%