

From: Amy Martenson <[REDACTED]>

Sent: Thursday, March 26, 2020 11:25 AM

To: Districts <districts@cityofnapa.org>; Tiffany Carranza <tcarranza@cityofnapa.org>; Caitlin Saldanha <CSaldanha@cityofnapa.org>

Cc: Gary Orton <[REDACTED]>

Subject: Napa County Progressive Alliance 4-District Map

[EXTERNAL]

Dear Ms. Carranza,

While we believe the five-district map we previously submitted is in the best interest of the community, we offer the following four-district map with similar qualities for the city council to consider (see attached). The map is also available at <https://districtr.org/edit/3095>.

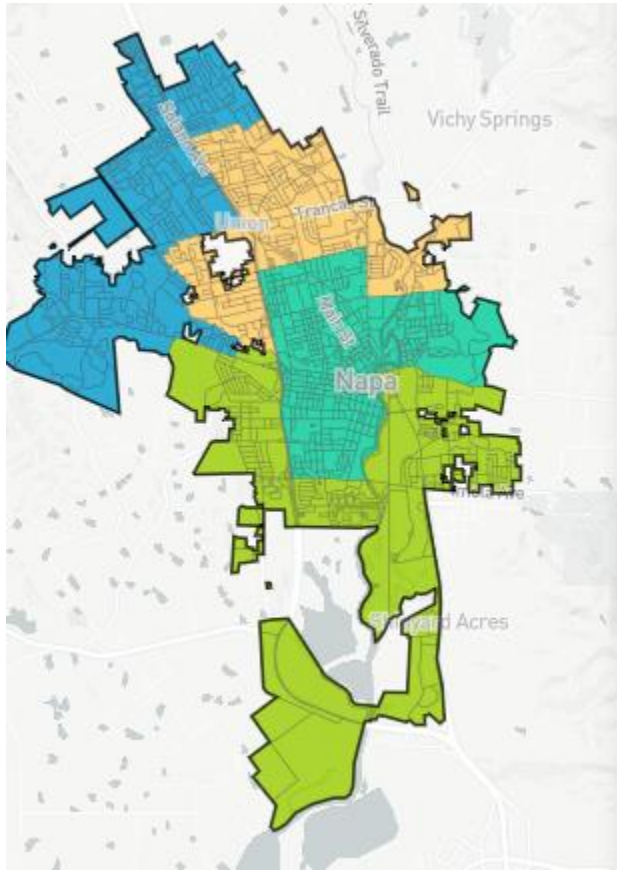
Our rationale for this map is the following:

1. The map meets the population requirement for each district with or without the two major county islands (the West Pueblo/Linda Vista and Imola/Parrish islands) being included.
2. The map maintains communities of interests, such as neighborhoods, ethnicity, socio-economic status, patterns of residential development (including historic neighborhoods), and local shopping centers. It also respects geographic definers, such as major streets, Highway 29, and the Napa River.
3. The map establishes two Latino-influential districts. Two Latino council members would accurately reflect the ethnic makeup of our city as a whole.
4. Looking ahead to when the largest county island (the West Pueblo/Linda Vista island) is annexed, these residents, who are majority Latino and comprise a high proportion of renters, would be part of a district that reflects their communities of interest; their votes would not be diluted by being placed in a predominantly white, affluent district—a factor that the council should strongly consider in approving district maps

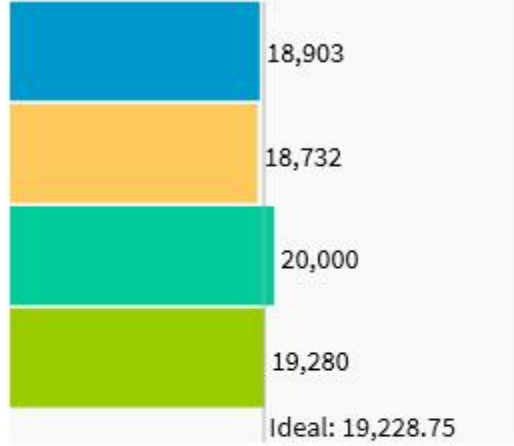
Respectfully submitted,

Napa County Progressive Alliance
Amy Martenson, Co-coordinator
Gary Orton, Secretary

NAPA COUNTY PROGRESSIVE ALLIANCE
FOUR-DISTRICT PROPOSAL



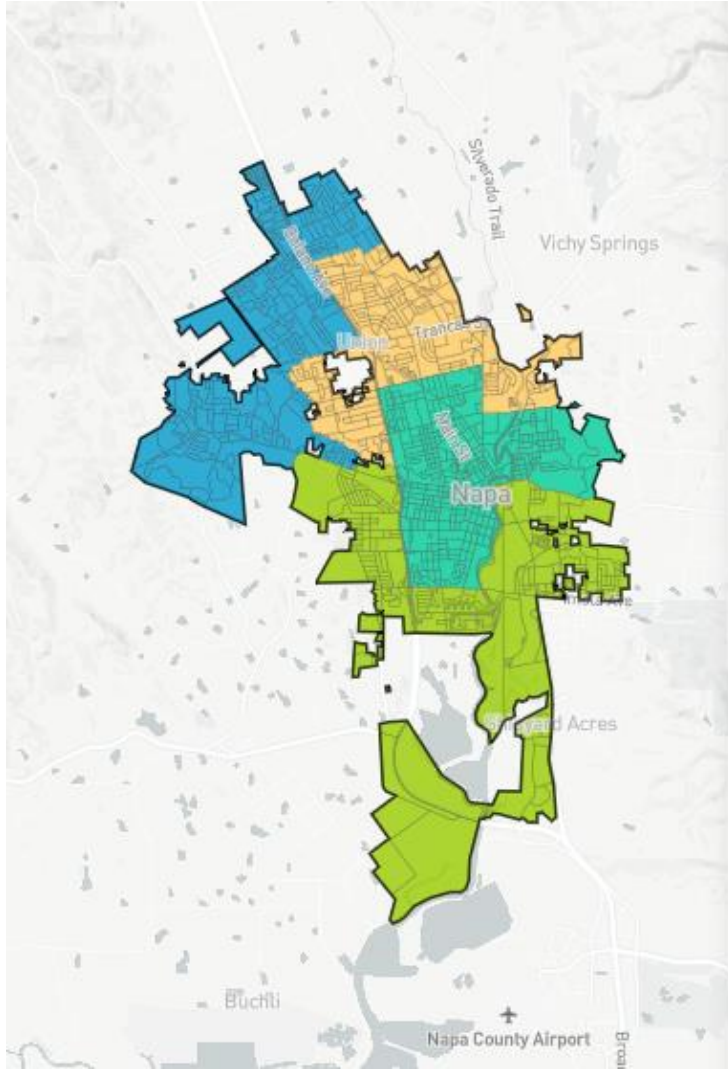
Population Balance



UNASSIGNED POPULATION: 0

MAX. POPULATION DEVIATION: 4.01%

Highlight unassigned units



▼ Racial Balance

COMPARE

WITH

AND

	White	Hispanic	Asian
1	74.7%	19.4%	2.6%
2	57.8%	36.3%	3.1%
3	51.2%	44.4%	1.3%
4	45.6%	49.6%	1.8%
Overall	57.2%	37.6%	2.2%

▼ VAP Balance

COMPARE

WITH

AND

	WWAP	HVAP	AVAP
1	77.6%	16.8%	2.9%
2	63.4%	30.8%	3.3%
3	57.4%	38%	1.6%
4	52.1%	43.2%	2.1%
Overall	62.7%	32.1%	2.5%