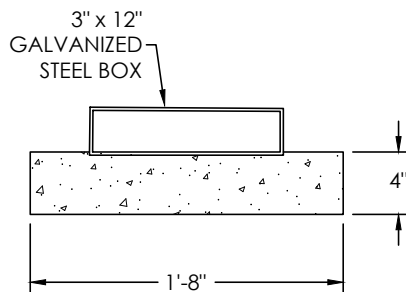
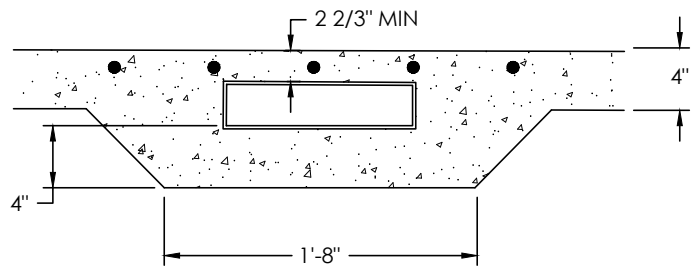


SECTION A-A



SECTION B-B



SECTION C-C

NOTES

1. BOX WIDTH MAY VARY FROM 6" TO 12" PER CITY APPROVAL.
2. GALVANIZED STEEL BOX TO BE 1/4" THICK.
3. ALL CONCRETE SHALL BE 4000 PSI (6 SACK PER CUBIC YARD).
4. REMOVE CURB AND GUTTER A MINIMUM OF ONE FOOT ON EACH SIDE OF THE DRAIN. CONNECT NEW CURB AND GUTTER WITH EXISTING PER CITY STD. S-4B.
5. IF SIDEWALK AND CURB ARE CONTINUOUS, POUR MONOLITHIC WITH WIRE FABRIC EXTENDING INTO CURB.
6. WIRE MESH SHALL BE FULL WIDTH OF SIDEWALK MINUS 2". LENGTH OF WIRE MESH SHALL BE BOX WIDTH PLUS 24" EACH SIDE.

CITY OF NAPA

PUBLIC WORKS DEPARTMENT

COMMERCIAL UNDER  
SIDEWALK DRAIN

DRAWN BY:	LFM
APPROVAL DATE:	05/2019
SCALE:	NONE
REVISED DATE:	10/2022

CHECKED BY:	IHH
APPROVED BY:	JBL
DRAWING NO.	D-5B